

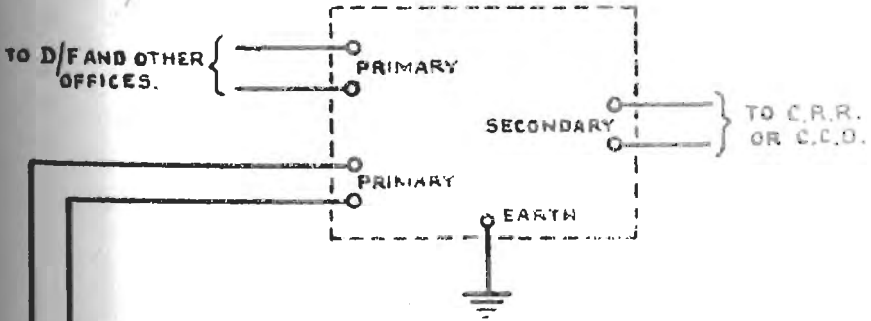
# OUTFIT R.I.S. (1).

50  
SUP

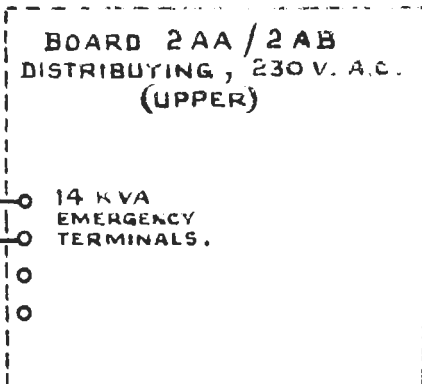
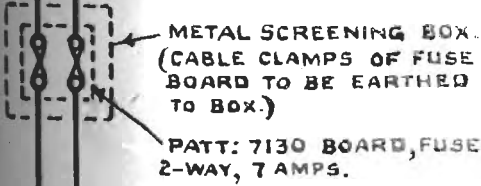
50 CYCLES SUPPLY FOR R.I.S. FROM R.D.F. OFFICE.

## C.C.O. ANNEXE.

PATT: X1720 TRANSFORMER  
230/280V. 300 V.A.

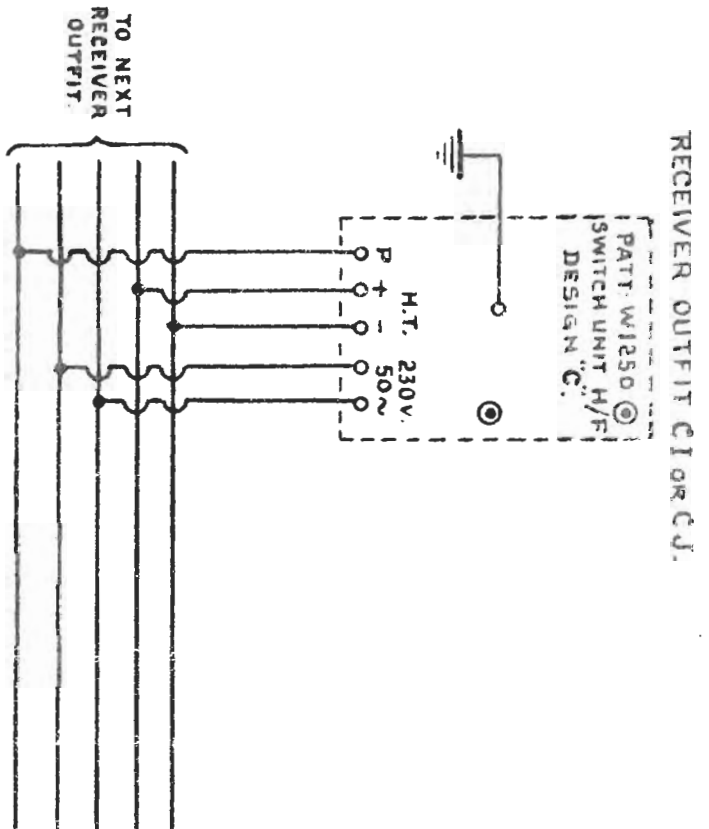
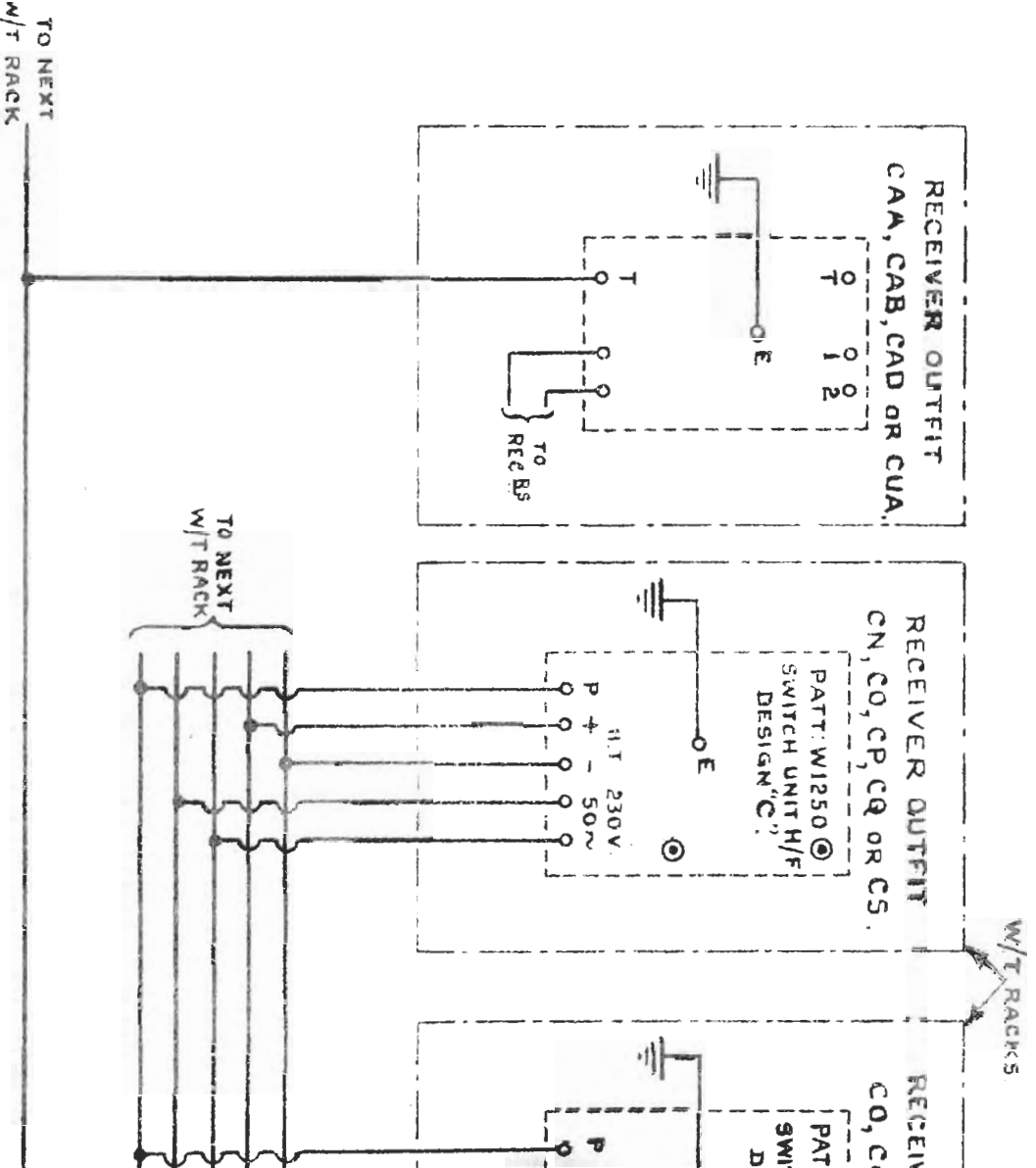


## R.D.F. RECEIVING OFFICE



# OUTFIT

C.C.O. OR C.R.R. — CONNECTIONS TO



TO PHASE CONTROL UNITS DESIGN B, WHEN FITTED.

CONNECTIONS  
TO PHASE  
CONTROL  
UNITS, "B."  
DESIGN B.

EVER OUTFIT  
CQ, CP OR CS.

ATT: W1250  
WITCH UNIT H/F  
DESIGN "C"

PATT: X1647  
PHASE CONTROL UNIT  
DESIGN "B"

230V. 50~  
INPUT

H.T. 230V.  
P + - 50~

T P

H.T. 230V. 50~  
INPUT

T P

50~ SUPPLY  
FROM PATT: X1728  
TRANSFORMER  
IN ANNEXE.

PATT: X1647  
PHASE CONTROL  
UNIT "B."  
DESIGN B.

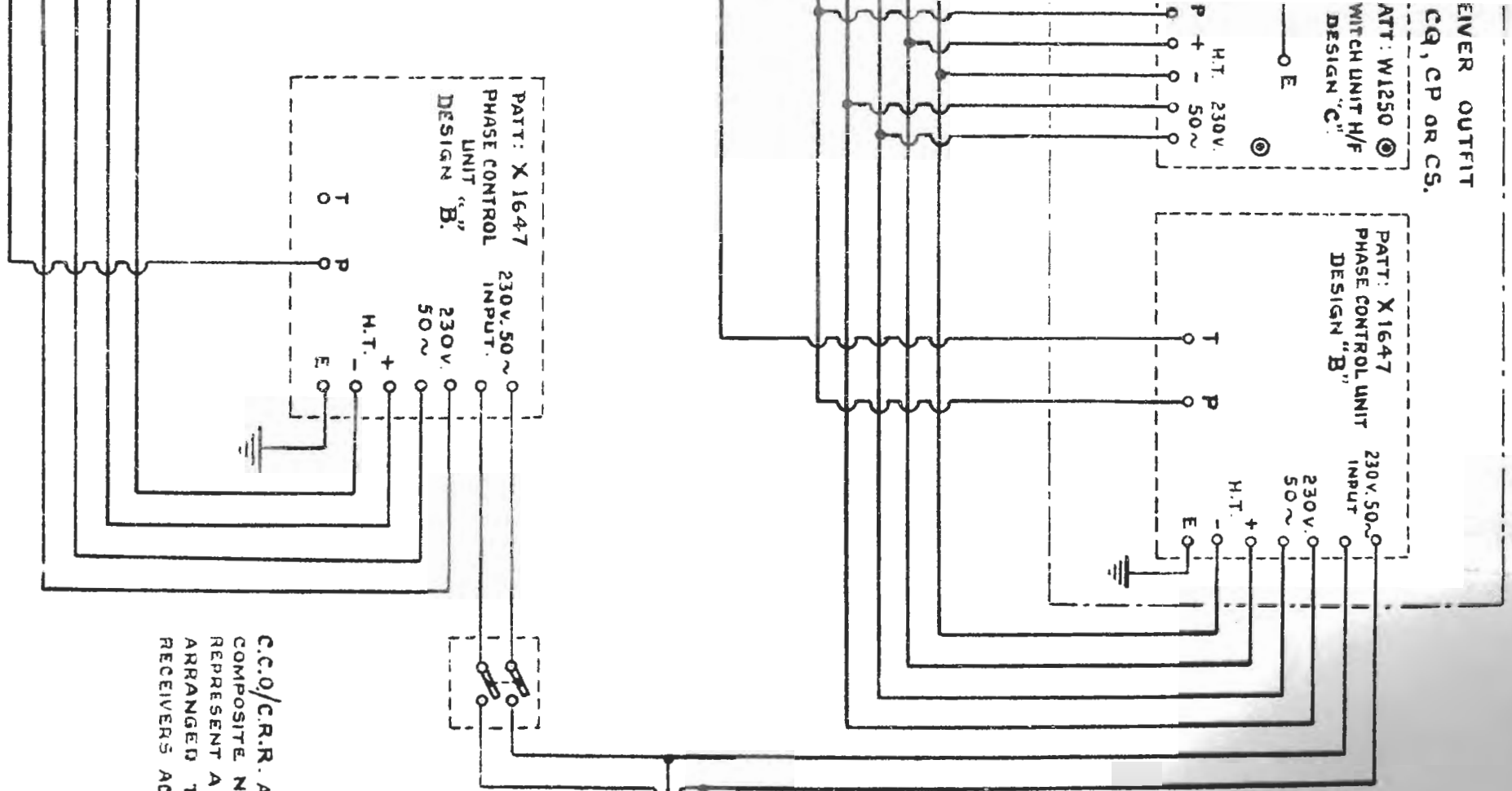
230V. 50~  
INPUT

H.T. 230V. 50~  
INPUT

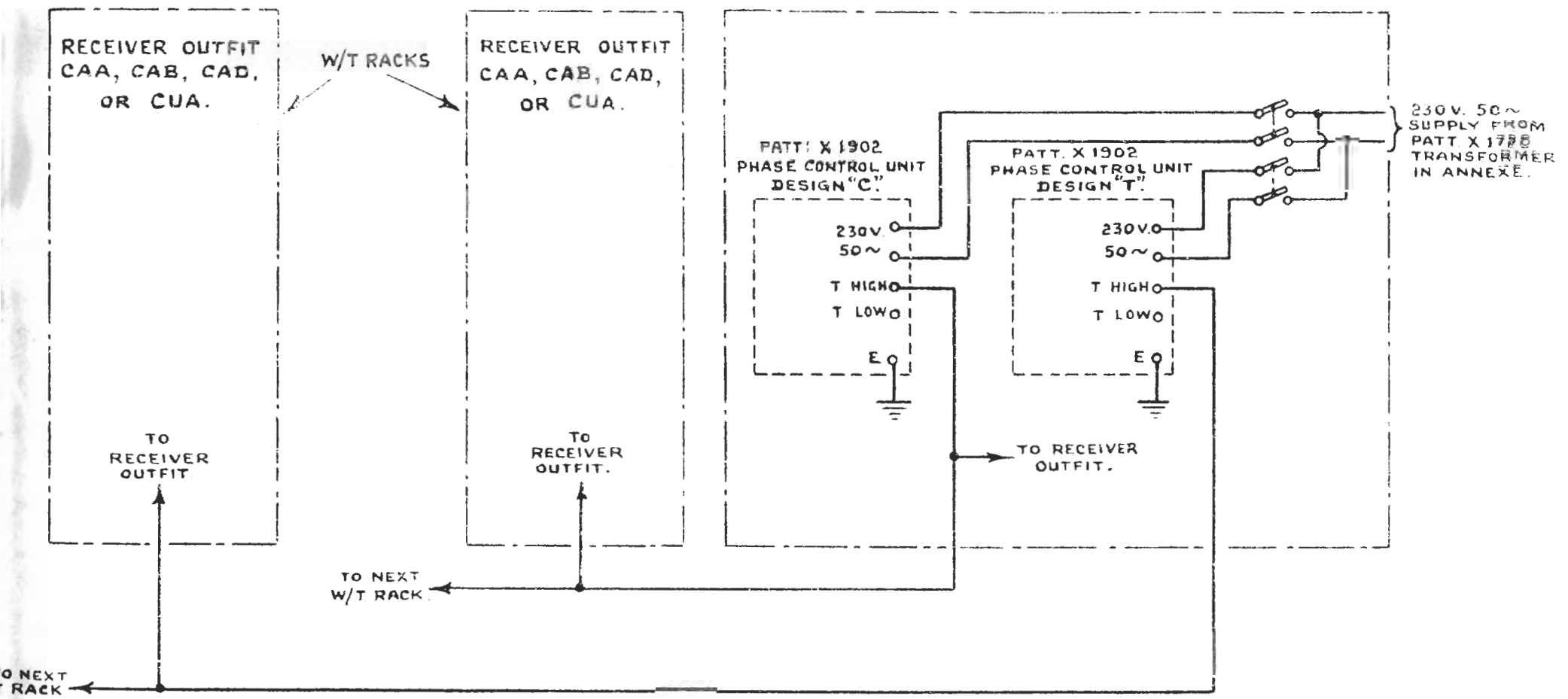
T P

NOTE.

C.C.O./C.R.R. ARRANGEMENTS ARE OF A  
COMPOSITE NATURE AND DO NOT, THEREFORE,  
REPRESENT A SPECIFIC CASE. WIRING IS  
ARRANGED TO SUIT THE TYPE OF  
RECEIVERS ACTUALLY FITTED.



C.C.O. OR C.R.R. - CONNECTIONS TO  
PHASE CONTROL UNITS, DESIGN "C" WHERE FITTED.

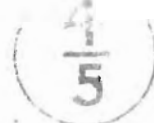


CONNECTIONS TO PHASE CONTROL UNITS, "C" DESIGN "C."



# OUTFIT R.I.S.(1)

D/F, SECOND OR AUXILIARY OFFICE OR T.R.



CONNECTIONS IN OFFICES.

## CONNECTIONS TO PHASE CONTROL UNIT, DESIGN "B", WHEN FITTED

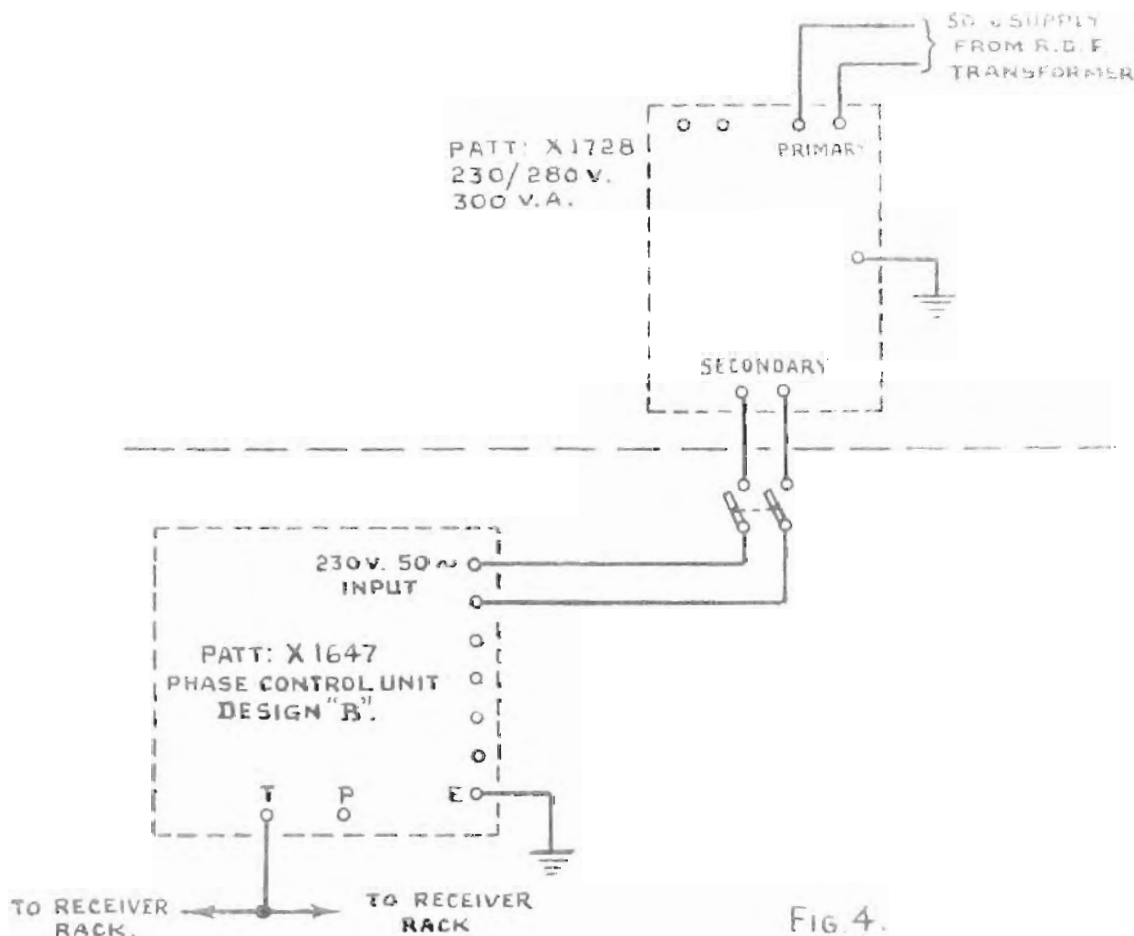
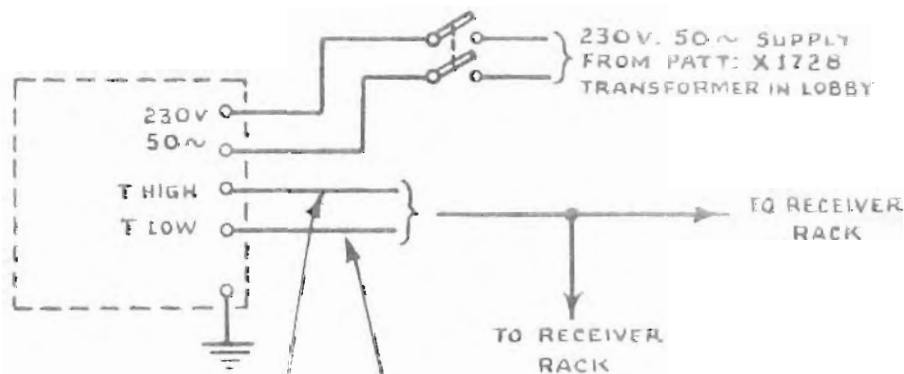


FIG. 4.

## CONNECTIONS TO PHASE CONTROL UNIT DESIGN "C", WHEN FITTED



RECEIVER OUTFITS CAA, CAB, CAD ETC AND D/F OUTFITS FA3, FA5, FC2, LMI, AND SD.

D/F OUTFITS FC5, FA5, FM2, LM2 AND FM5

# OUTFIT R.I.S.(1).

RECEIVER OUTFITS CI AND CJ.  
CONNECTIONS TO SWITCH UNIT, DESIGN "C"

6  
7

CI, CJ,  
CN, CO,  
CP, CQ,  
CS.

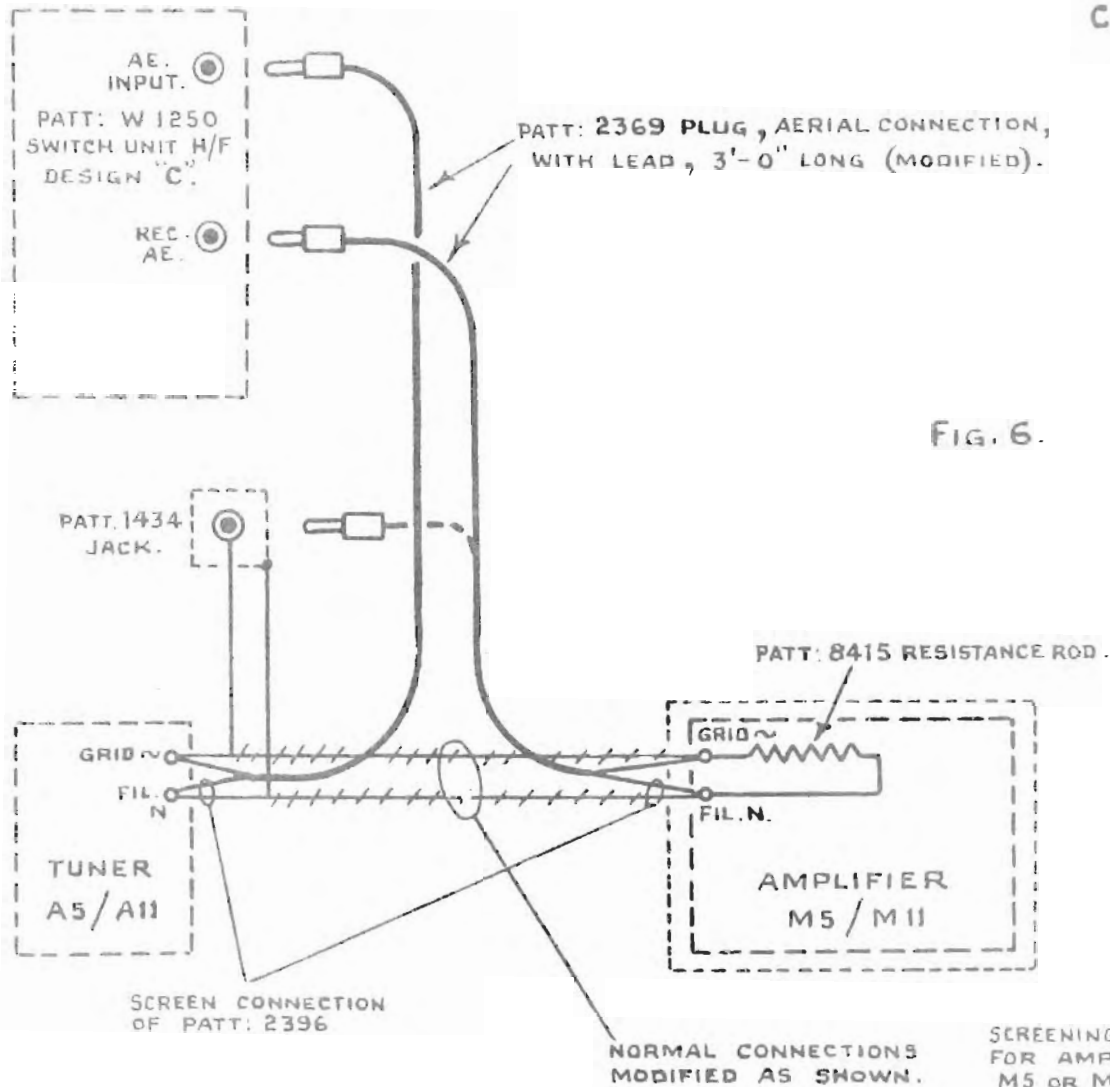


FIG. 6.

RECEIVER OUTFITS CN, CO, CP, CQ & CS.  
CONNECTIONS TO SWITCH UNIT, DESIGN "C".

PATT: 1343 JACK.

PATT: 1429 PLUGS, PAIR OF, WITH LEAD.

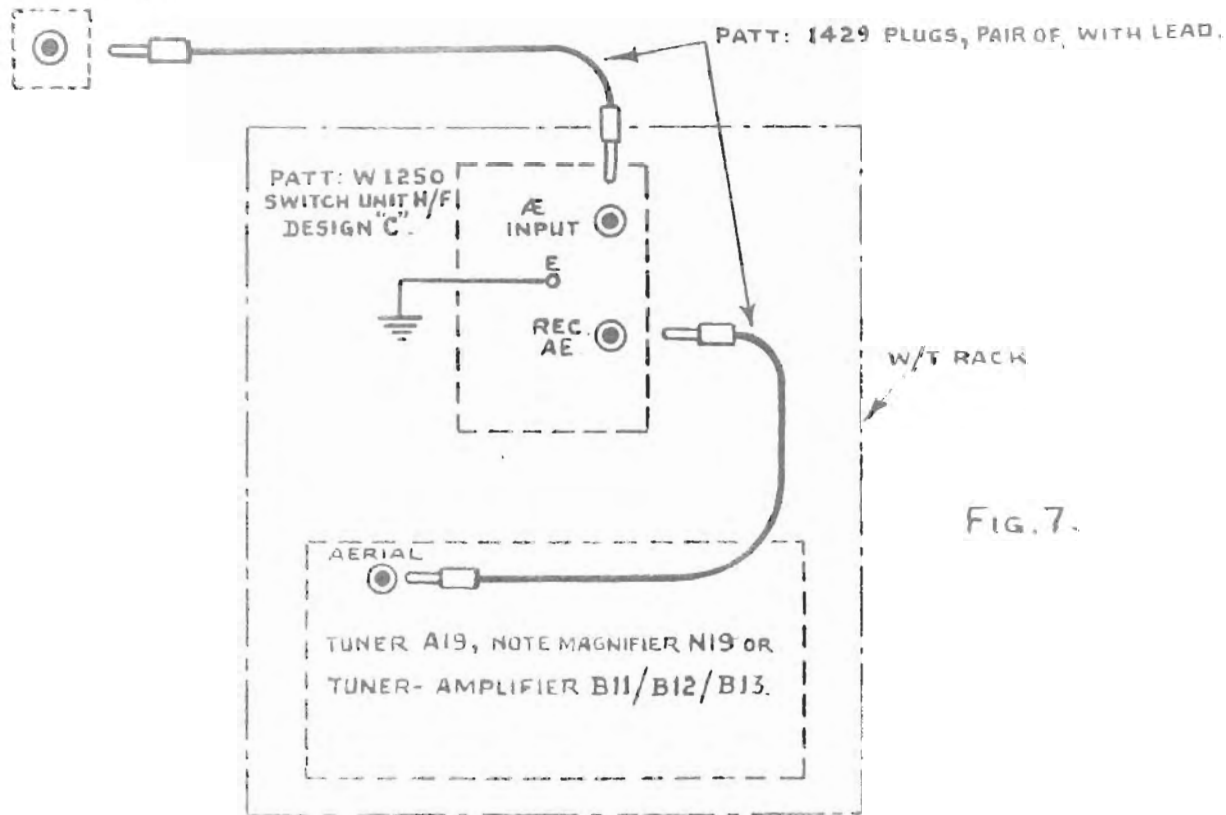


FIG. 7.

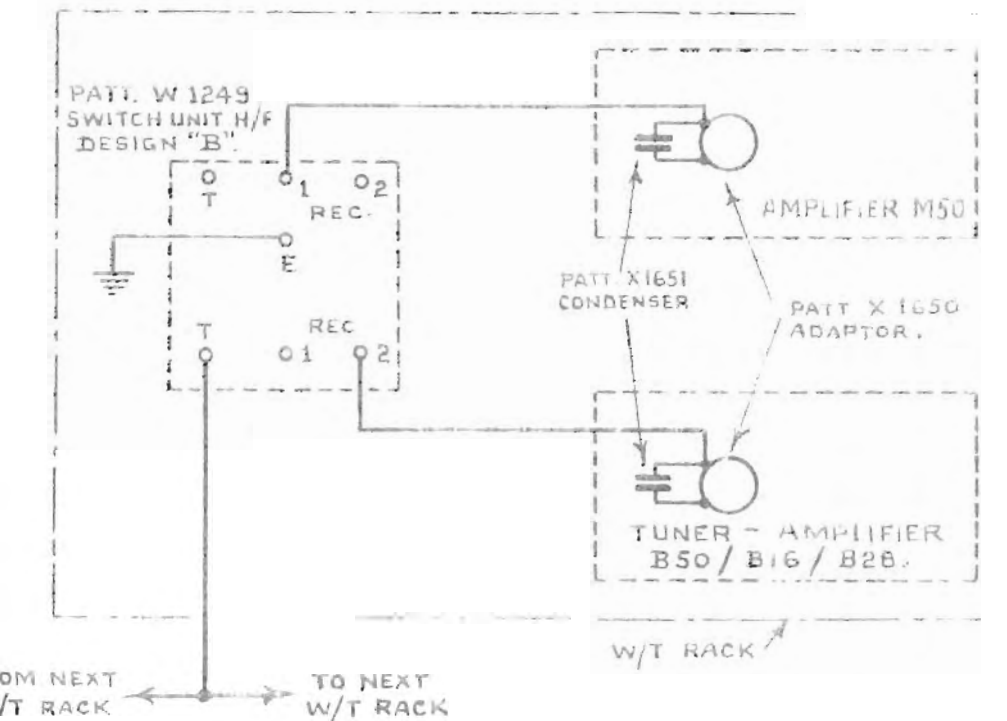
CAA, CAB,  
CAD, CUA,  
CDC, CDF.

## RECEIVER OUTFITS CAA, CAB, CAD, CUA, CDC AND CDF.

CONNECTIONS TO RECEIVER OUTFITS WITH AND A TROLL SWITCH UNITS.

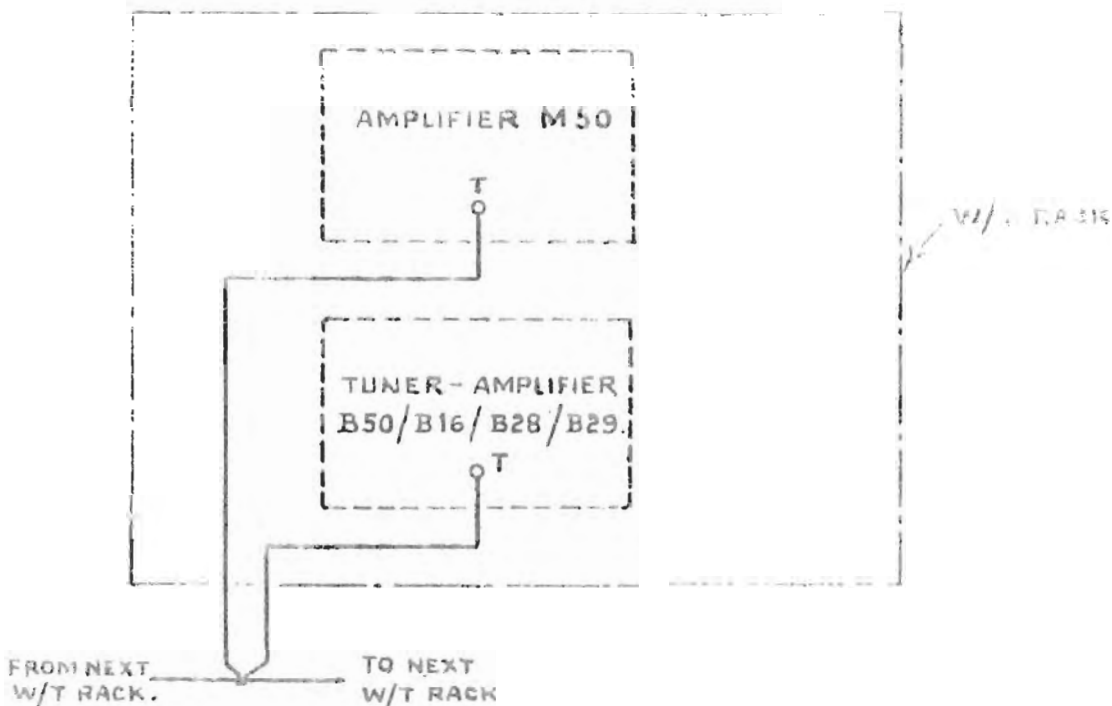
### (a) RECEIVER OUTFITS FITTED WITH :-

PATT:	4998	AMPLIFIER M50
PATT:	6665	TUNER - AMPLIFIER B50
PATT:	6642	TUNER - AMPLIFIER B16
PATT:	W 2835	TUNER - AMPLIFIER B28



(b) RECEIVER OUTFITS FITTED WITH:-

PATT: 4998A    AMPLIFIER M50  
PATT: 6665A    TUNER-AMPLIFIER B50.  
PATT: 6642A    TUNER-AMPLIFIER B16.  
PATT: W 2835A    TUNER-AMPLIFIER B28.  
PATT: W 2698    TUNER-AMPLIFIER B29.



D/F OUTFIT FC2.  
CONNECTIONS TO RECEIVERS.

D/F  
OUTFITS.

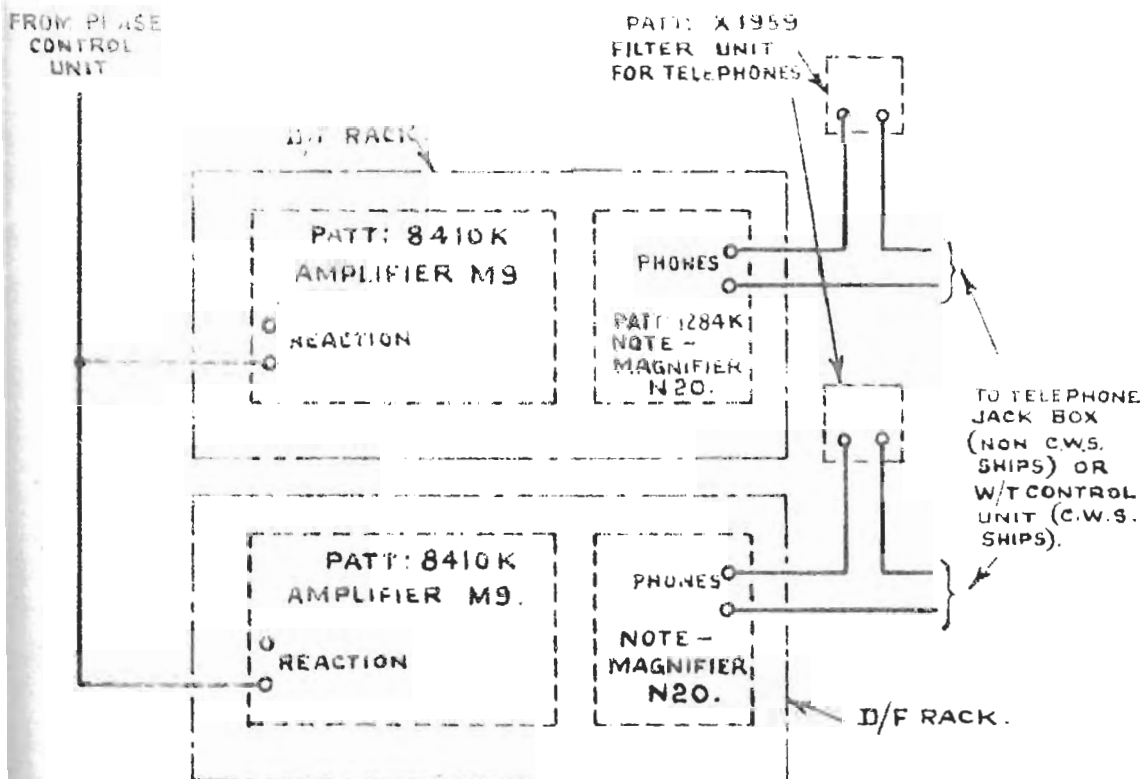
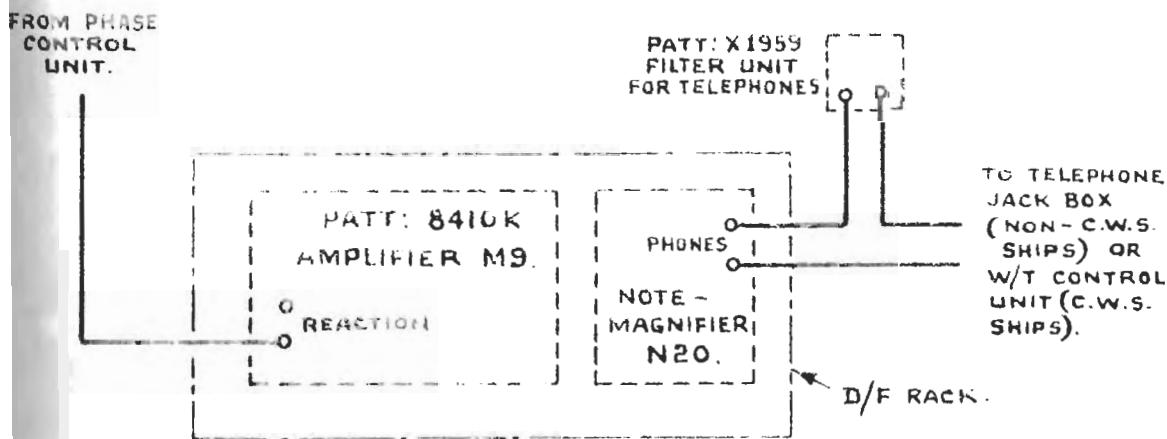


Fig. 9(a)

D/F OUTFITS FA3, LM1, AND SD.  
CONNECTIONS TO RECEIVERS.



D/F OUTFITS LM2, FA5, FC5, FM2 AND FM5.  
CONNECTIONS TO RECEIVERS.

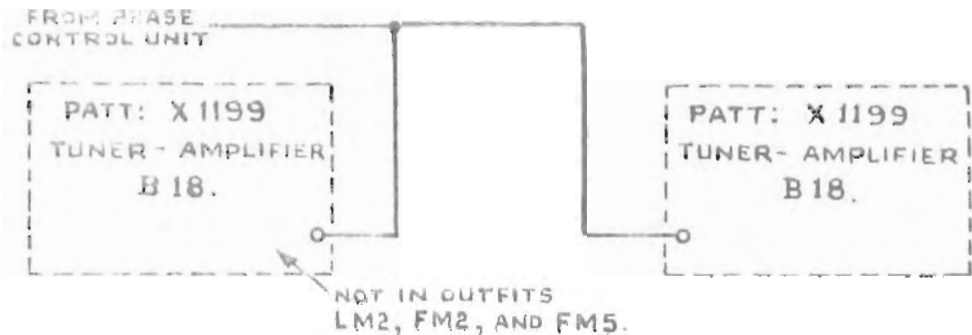
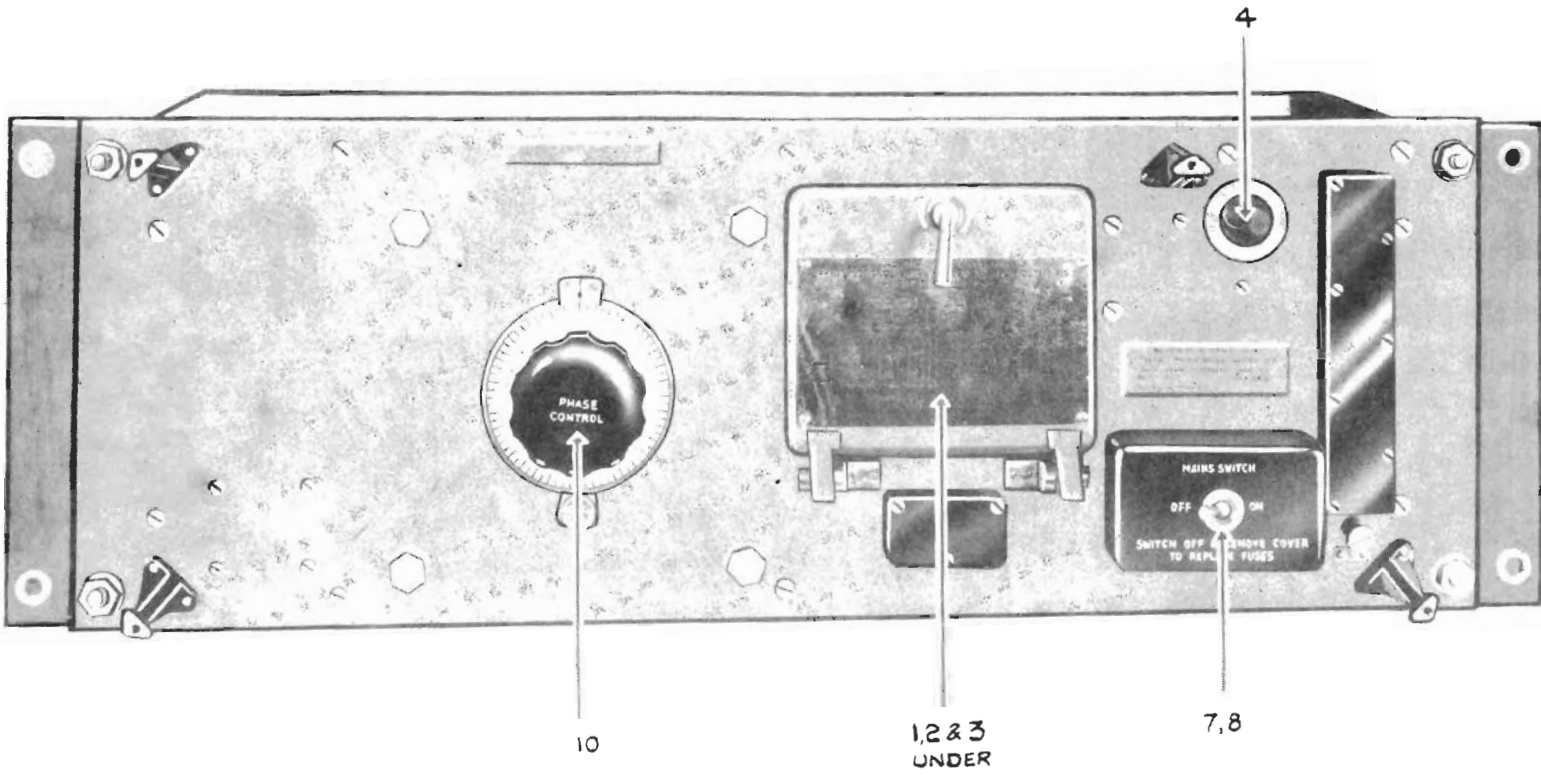


FIG. 10.



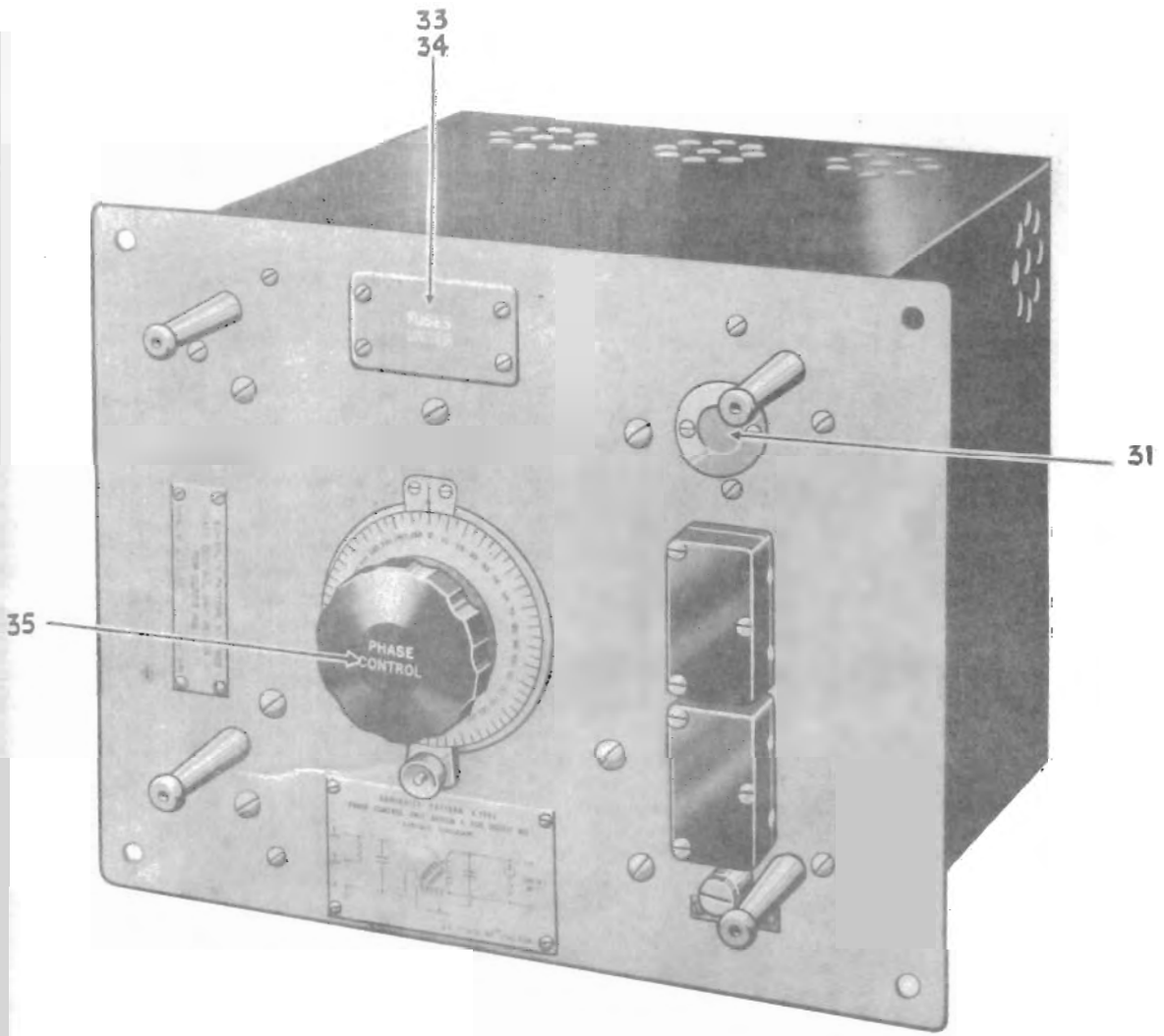
FRONT VIEW

# OUTFIT R.I.S. (I)

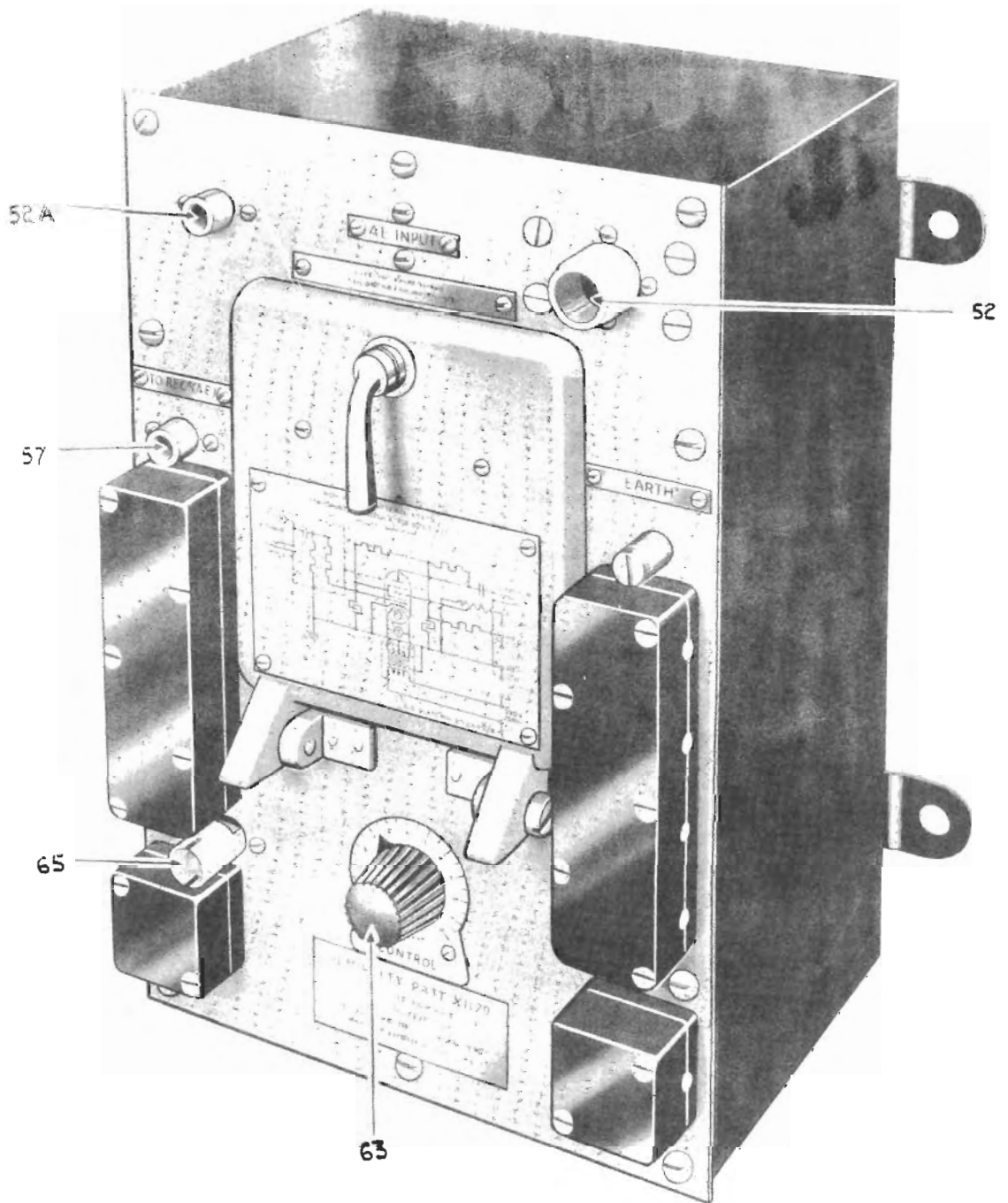
PATT. X1902 PHASE CONTROL UNIT, DESIGN "C"

25

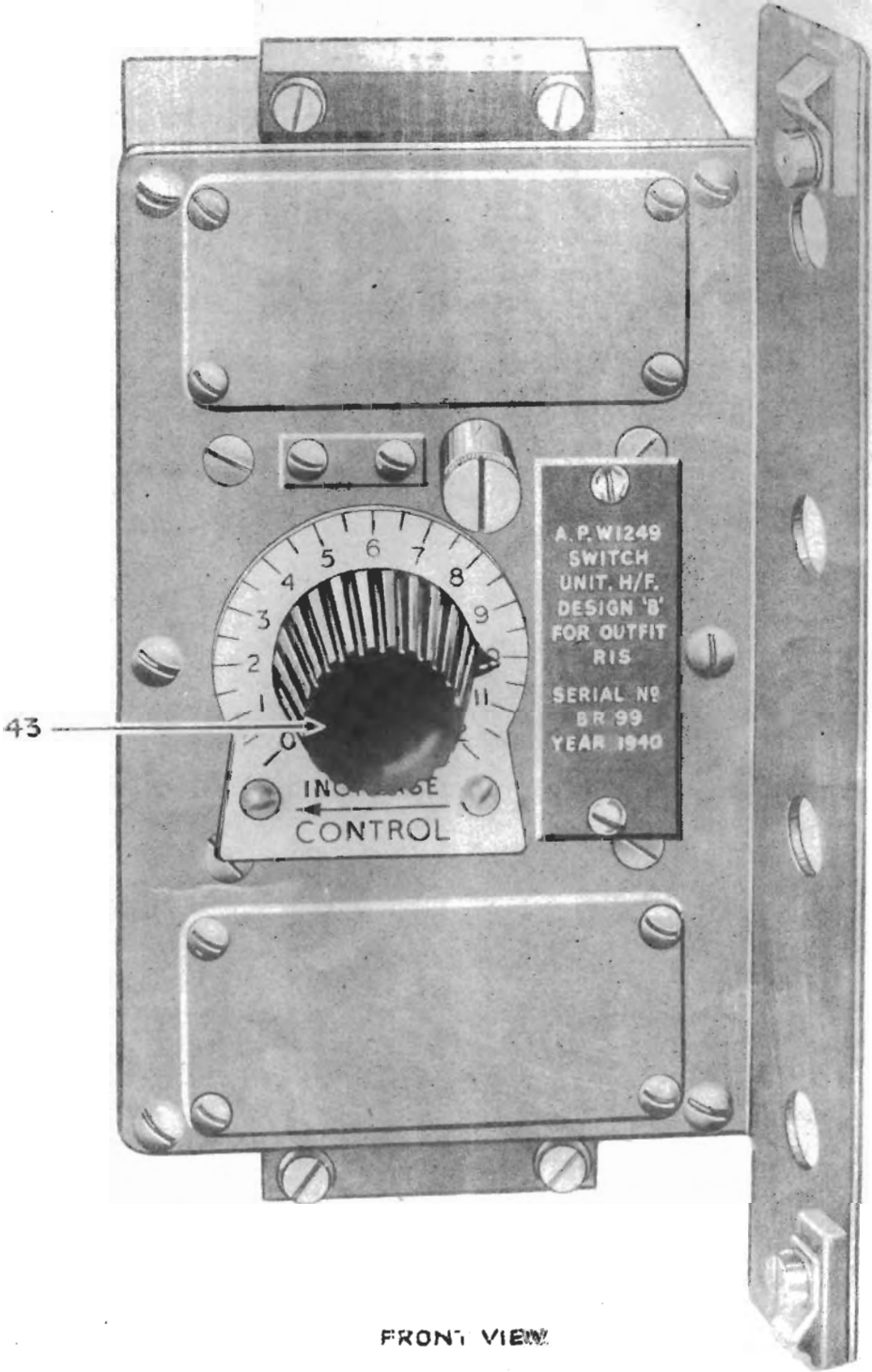
PHASE  
CONTROL  
UNIT  
DESIGN "C"



FRONT VIEW



FRONT VIEW



FRONT VIEW