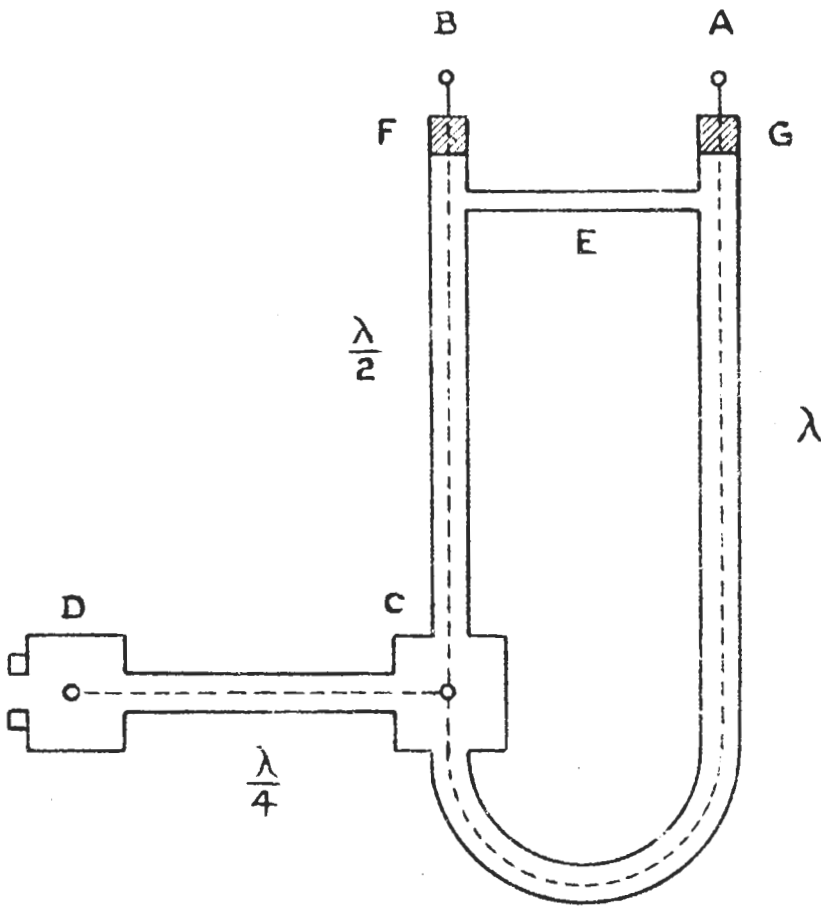


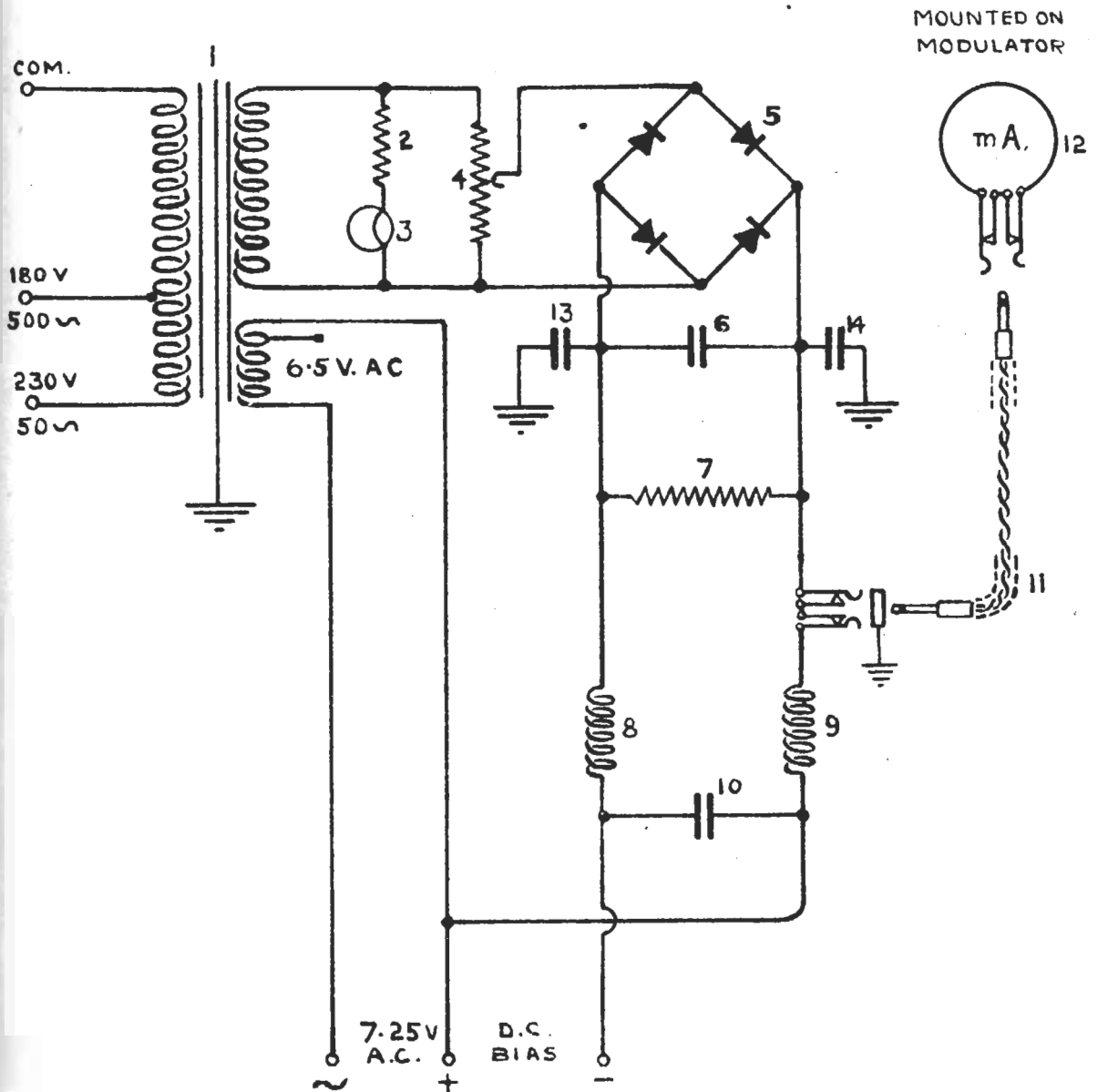
AERIAL MATCHING TRANSFORMER

SCHEMATIC DIAGRAM.



A	CONNECTOR AT END OF INNER .
B	CONNECTOR AT END OF INNER .
C	3-WAY JUNCTION BOX.
D	2-WAY JUNCTION BOX WITH RING SEAL .
E	EARTH CONNECTOR.
F	END SEALING PLUG.
G	END SEALING PLUG.

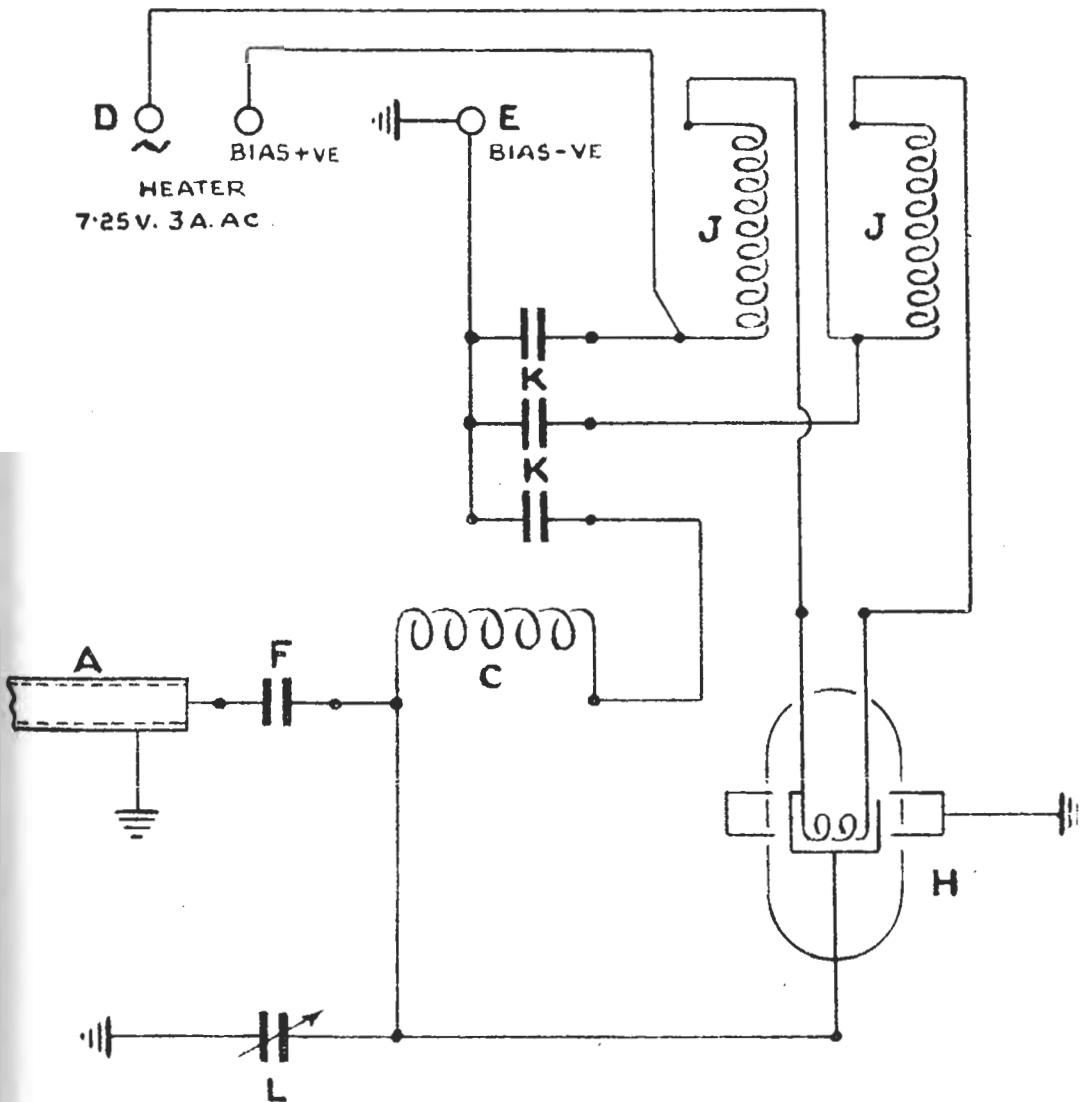
SHOWING CONNECTION TO MODULATOR PANEL.



MOUNTED ON MODULATOR

1	W3733	TRANSFORMER, 7.5V. 2.5V.D.C.	8		CHOKE.
2		RESISTANCE, 30 OHMS, 1WATT.	9		CHOKE
3	56 A	BULB.	10	W222	CONDENSER, 4 mfd, 800V. PAPER.
4	W5229	RESISTANCE, PRESET 2.5Ω 12WATT	11	W1034	PLUGS, PAIR OF, WITH SCREENED LEAD.
5		SELENIUM RECTIFIER, S.T. 8 C 280/LU 1014 A.	12	W406	MILLIAMMETER 0.25 mA.
6	885B	CONDENSER, 250 mfd, 12V. ELECTROLYTIC	13	W221	CONDENSER ² , 2 mfd, 800 V
7	W155B	RESISTANCE, 1000Ω, 1/2 WATT.	14	W221	CONDENSER, 2 mfd, 800 V.

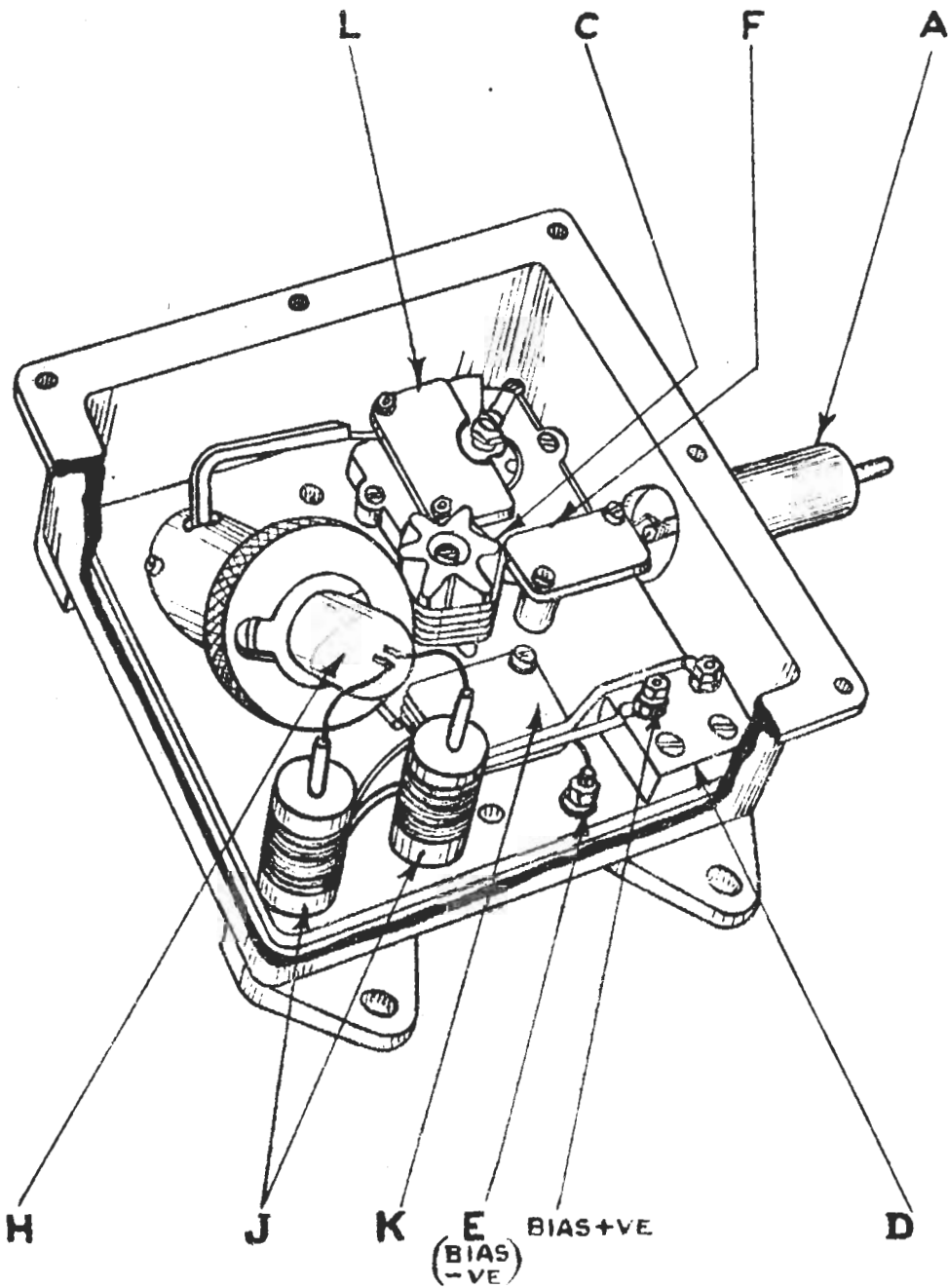
DIODE SWITCH CIRCUIT DIAGRAM.



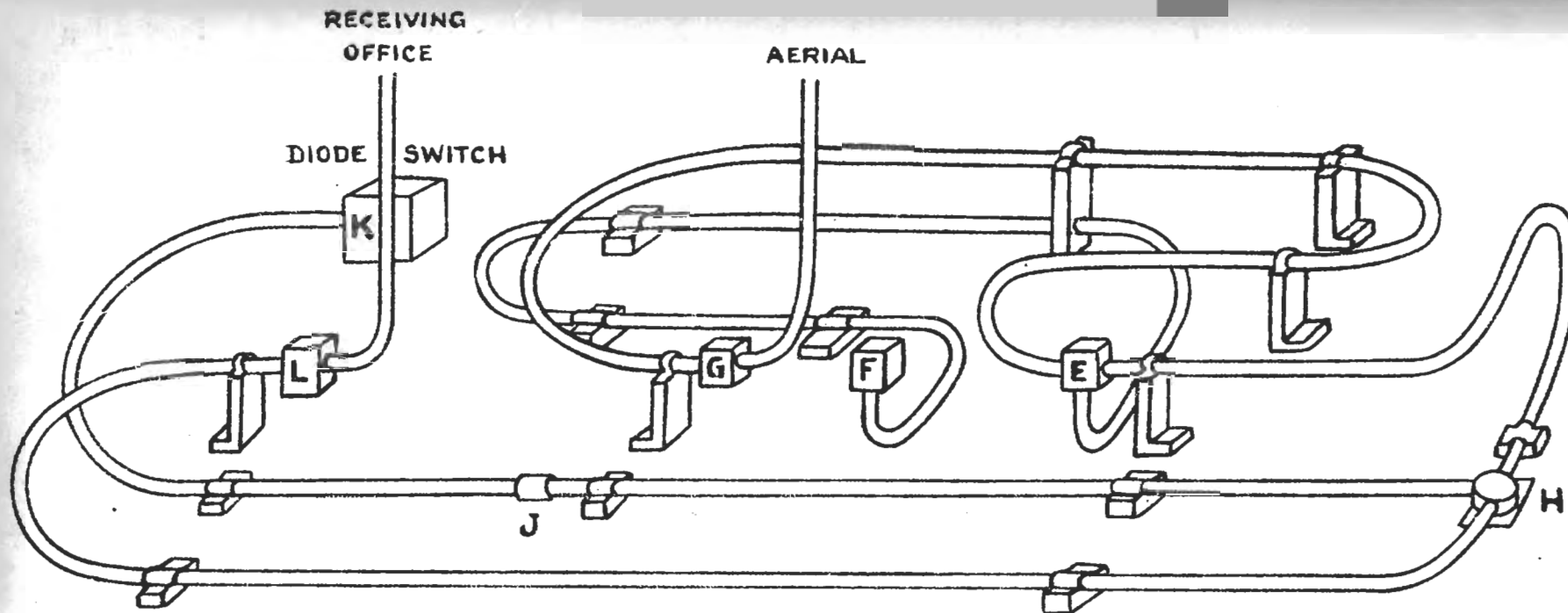
WHEN SPARK GAP IS USED HEATER CHOKES WILL NOT BE CONNECTED.

LETTER	DESCRIPTION
A	END OF PYROTENAX TRANSFORMER
C	TUNING COIL
D	TERMINAL BOARD
E	EARTH TERMINAL
F	BLOCKING CONDENSER ($\cdot 001 \mu F$)
H	DIODE OR SPARK GAP
J	HEATER CHOKES <small>NEW DESIGN 32 FULL TURNS OF 22 SWG ENAMELED COPPER WIRE</small>
K	BLOCKING CONDENSERS ($\cdot 001 \mu F$)
L	TUNING CONDENSER.

VIEW OF DIODE SWITCH.



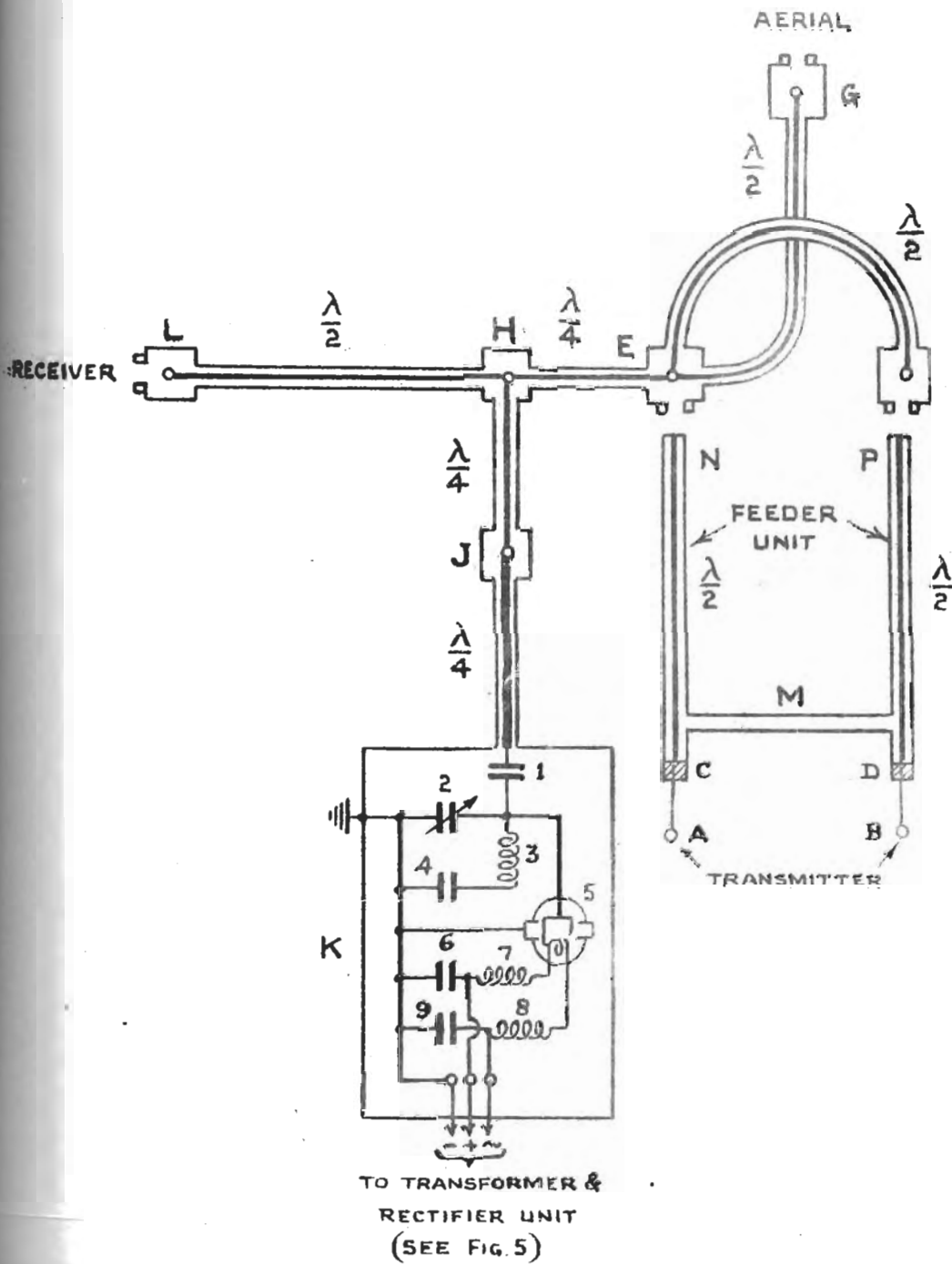
LETTER	DESCRIPTION
A	END OF PYROTENAX TRANSFORMER
C	TUNING COIL
D	TERMINAL BOARD
E	EARTH TERMINAL
F	BLOCKING CONDENSER ($0.001 \mu\text{F}$)
H	DIODE OR SPARK GAP
J	HEATER CHOKES <small>NEW DESIGN 32 FULL TURNS OF 22 SWG ENAMELED COPPER WIRE</small>
K	BLOCKING CONDENSERS ($0.001 \mu\text{F}$)
L	TUNING CONDENSER



E	4-WAY JUNCTION BOX WITH RING SEAL FOR TRANSMITTER CONNECTION.
F	2-WAY JUNCTION BOX WITH RING SEAL FOR TRANSMITTER CONNECTION.
G	2-WAY JUNCTION BOX WITH RING SEAL FOR AERIAL CONNECTION.
H	3-WAY JUNCTION BOX.
J	2-WAY JUNCTION BOX.
K	DIODE SWITCH.
L	2-WAY JUNCTION BOX WITH RING SEAL FOR RECEIVER CONNECTION.

DIODE SWITCH & FEEDER UNIT SCHEMATIC DIAGRAM.

13

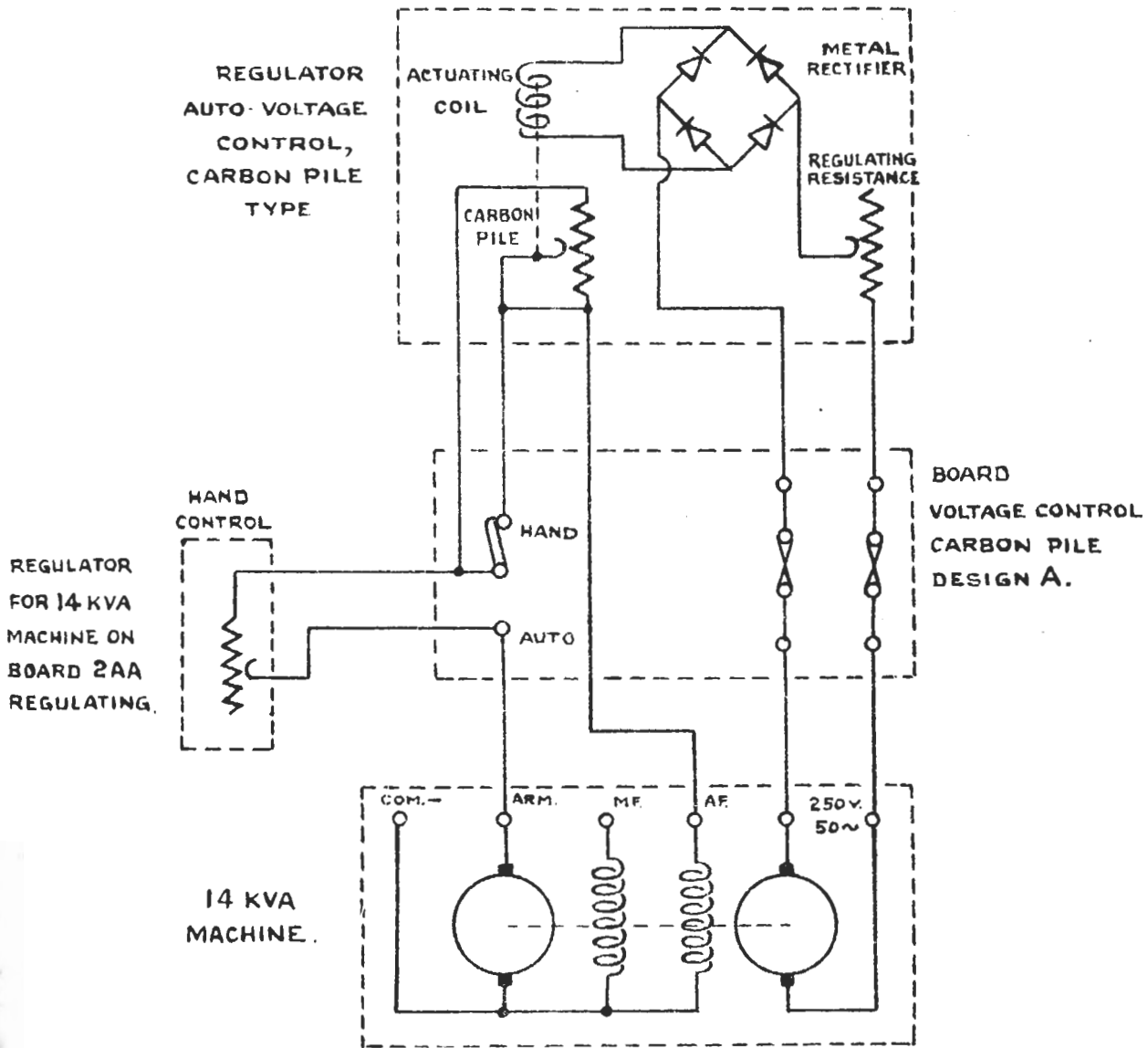


1	W1878	CONDENSER, 0.001 MFD. T.C.C.
2		CONDENSER, VAR.; BULGIN TYPE SW. 53
3		COIL.
4	W1878	CONDENSER, 0.001 MFD. T.C.C.
5	CV8	VALVE CV8. CLASS B ^x .
6	W1878	CONDENSER, 0.001 MFD. T.C.C.
7		NEW DESIGN 32 FULL TURNS CHOKE. OF 22 S.W.G ENAMEL ³ COPPER W.
8		NEW DESIGN 32 FULL TURNS CHOKE. OF 22 S.W.G ENAMEL ³ COPPER WIRE
9	W1878	CONDENSER 0.001 MFD. T.C.C.

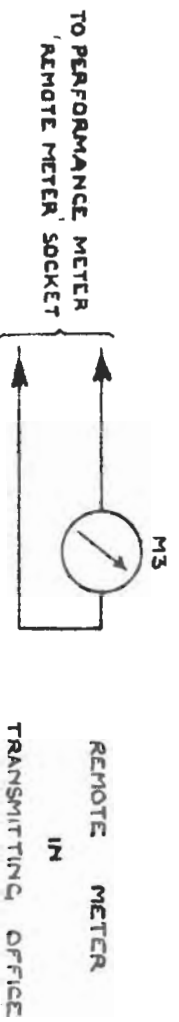
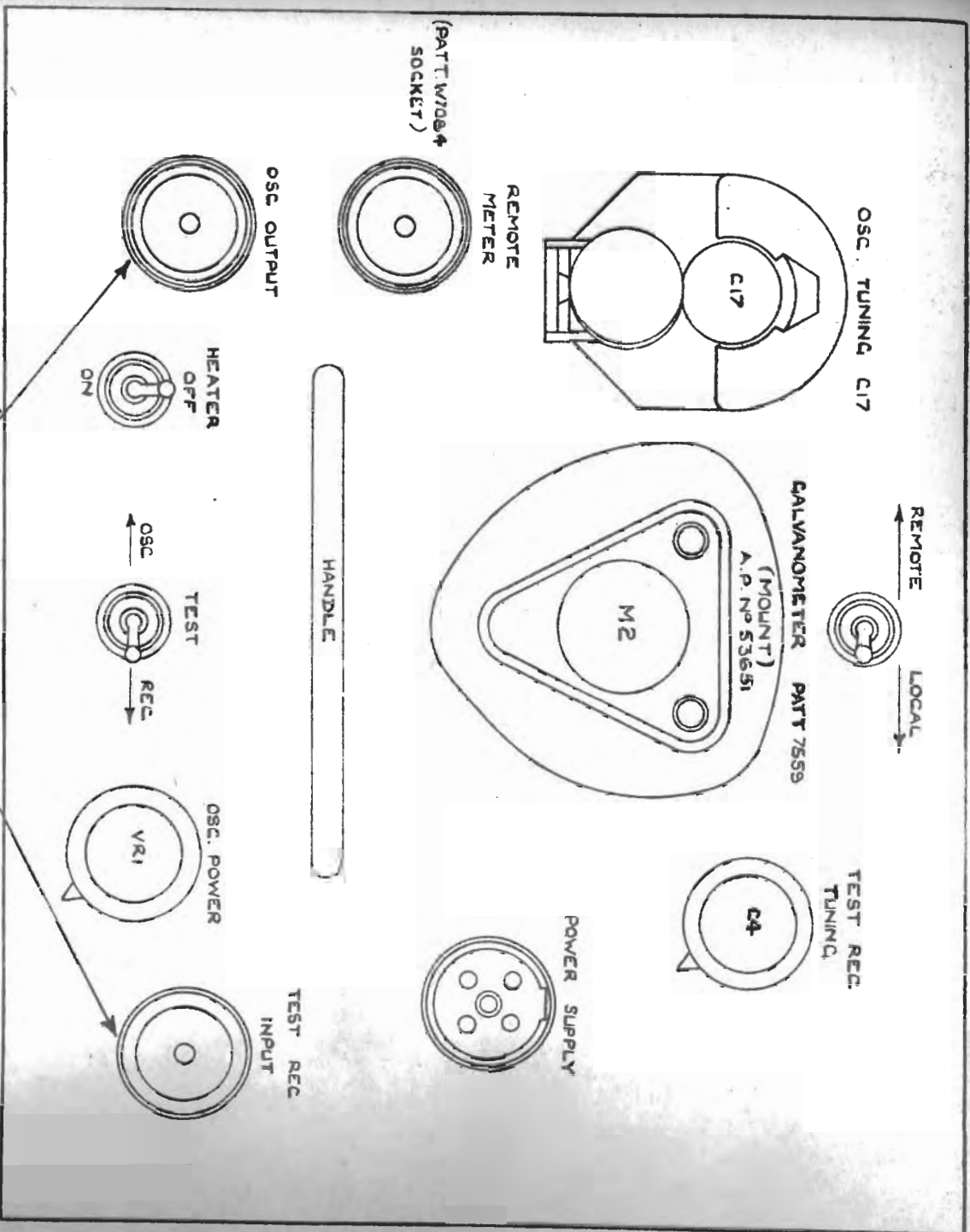
A & B	CONNECTORS AT ENDS OF INNERS.
C & D	SEALING PLUGS
E	4-WAY JUNCTION BOX WITH RING SEAL FOR TRANSMITTER CONNECTION.
F	2-WAY JUNCTION BOX WITH RING SEAL FOR TRANSMITTER CONNECTION.
G	2-WAY JUNCTION BOX WITH RING SEAL FOR AERIAL CONNECTION.
H	3-WAY JUNCTION BOX.
J	2-WAY JUNCTION BOX.
K	DIODE SWITCH.
L	2-WAY JUNCTION BOX WITH RING SEAL FOR RECEIVER CONNECTIONS.
M	EARTHING CLAMP.
N & P	HALF-WAVELENGTH CONNECTIONS.

14 KVA MACHINE

AUTO-VOLTAGE CONTROL WIRING.



NOTE:- DIAGRAM SHOWS WIRING FOR ONE MACHINE ONLY.



OSC. TUNING C17

C17

REMOTE METER

(PAT. 71084 SOCKET)

OSC. OUTPUT

HEATER OFF ON

TEST

OSC

REC

OSC. POWER

VR1

TEST REC INPUT

HANDLE

REMOTE

LOCAL

CALVANOMETER (MOUNT) PAT. 7559

A.P. No 53651

M2

TEST REC. TUNING

C4

POWER SUPPLY

10H/160 PLUGS

TO PERFORMANCE METER 'REMOTE METER' SOCKET

M3

REMOTE METER IN TRANSMITTING OFFICE

PATT. 53914

PERFORMANCE

METER

DESIC

3

VIEWS